

Entering (busy) port basins is a special maneuver where it is important to consider various factors.

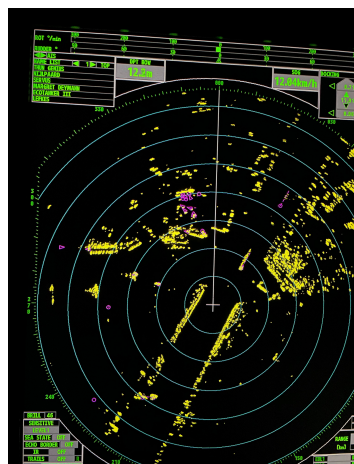
GOOD PRACTICE

- ✓ Maintain contact with the control post regarding entering the port.
- ✓ Take weather conditions such as wind and fog into account.
- ✓ Be aware of currents. Ebb and flow can have a strong impact in certain ports.
- ✓ Moderate speed so that entering can be done in a controlled manner.
- ✓ Consider other waterway users. Ensure everyone has sufficient space on the water. Wait if necessary until there is enough space to enter the port, especially during busy times.



BAD PRACTICE

- x Entering the port basin so tightly around the corner that outgoing vessels have no space.
- x Engaging the bow thruster at the last moment, making it impossible to adjust in time in case of failure.
- x Not giving or giving too little space to other waterway users.



ACTION QUESTIONS

- At which ports is a lookout at the bow desirable?
- Discuss a near-collision in a port area. What factors played a role?
- Consider how your ship is seen from recreational vessels and sea-going vessels.

