

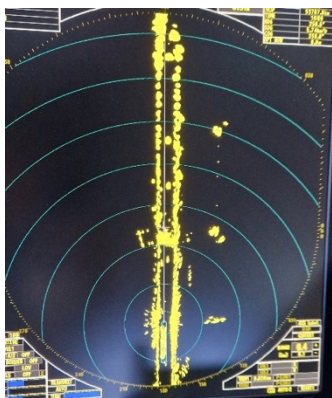
With this Safety Alert, we wish to draw your attention to a changed situation on the Rhein-Herne Canal between kilometre 18,8 and 20,8.

There has been damage to the sheet piling at this location for a long time, requiring vessels to pass with caution. However, the red buoys have been relocated since April 29, 2026, causing them to narrow the navigation channel even further.

The navigation channel is currently 16 meters wide. The permitted barge size is 11,45 meters.

As a result, the buoyage is not visible when navigating by radar, as it is lost in the echo of one's own barge.

Additionally, due to the limited AIS signal at the location and the fact that barges must lower VHF antennas before the bridge, contact with oncoming barges may be poor or non-existent.

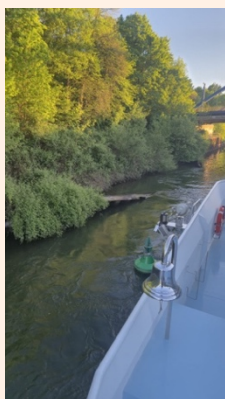


POSSIBLE DANGERS

- Collisions with submerged sheet pile walls
- Sailing over buoys
- Collisions with oncoming barges

MEASURES

- Reduce your speed in good time
- Use cameras or mirrors on the side of the ship to keep the buoyage visible
- Take oncoming barges into account, even if they are (temporarily) not visible on the AIS



Referenties/Bronnen:

https://www.elwis.de/DE/dynamisch/Nfb/NfbDetailview:elwis_nfb_search:2025/2429
Information of PZI members